



TOWN OF DIDSBURY AGENDA
Special Council Meeting
Wednesday October 14, 2020 at 6:00 p.m.
Council Chambers

1. CALL TO ORDER
2. ADOPTION OF AGENDA
3. CLOSED MEETING
In accordance with the Freedom of Information & Protection of Privacy Act
 - 3.1 Sec. 24(1) Advice from Officials (Land)
 - 3.2 Sec. 19(1) Confidential Evaluations
4. ADJOURNMENT



SPECIAL COUNCIL MEETING Request for Decision (RFD)

Vision: The Place to Grow.

Mission: Creating the Place to Grow.

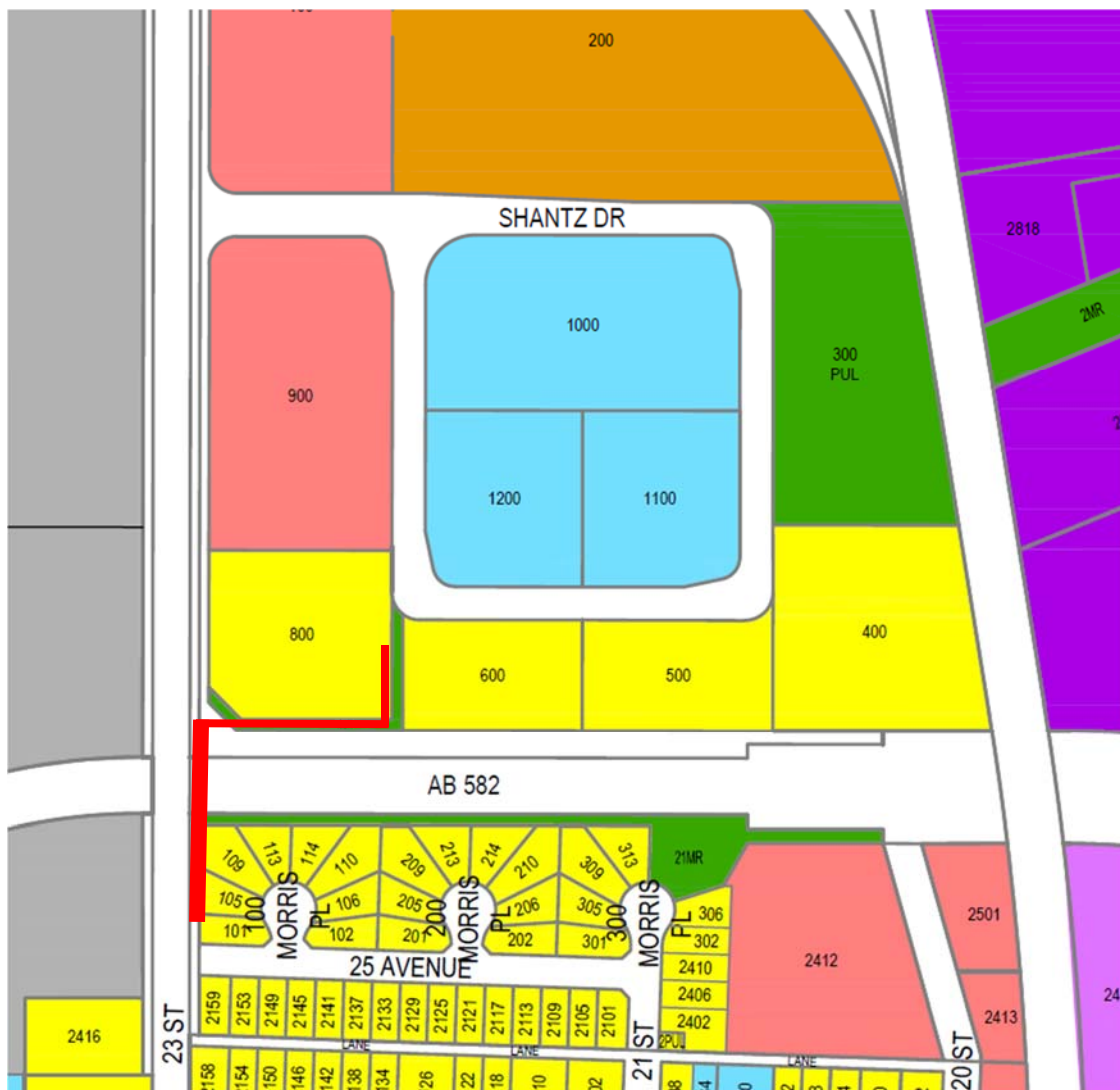
COUNCIL MEETING DATE	October 14, 2020
SUBJECT	Shantz - Pedestrian Connectivity
ORIGINATING DEPARTMENT	Public Works
AGENDA ITEM	3.1

BACKGROUND/PROPOSAL:

Council asked for the costs associated with 2 of the options presented at the October 13 Council Meeting on the Shantz Pedestrian Connectivity.

The budget approved for the project 'Pedestrian Connectivity – Shantz' is \$150,000 funded by the BMTG grant.

Option 1: Install an asphalt pathway on the south side of highway 582 to the highway and continue through the Town's municipal reserve as demonstrated on the map below. Again, a portion of this pathway would need to be removed when the intersection is updated.





SPECIAL COUNCIL MEETING Request for Decision (RFD)

Vision: The Place to Grow.

Mission: Creating the Place to Grow.

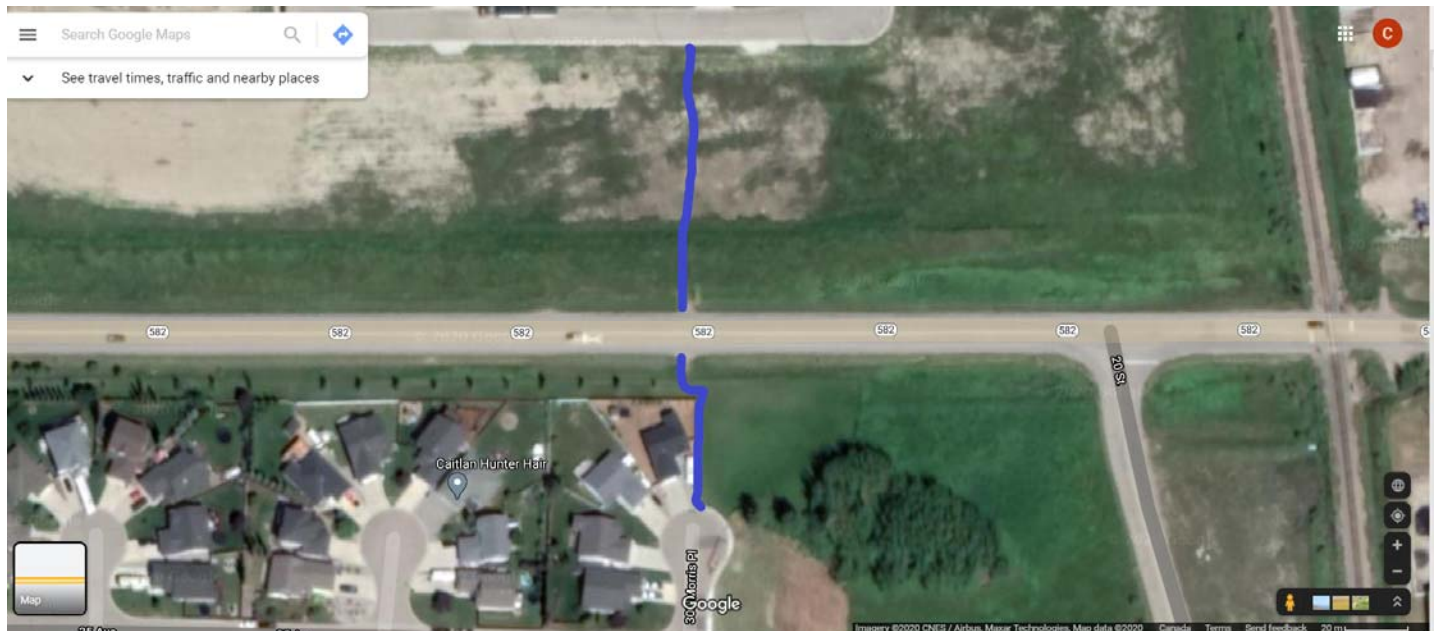
Concrete sidewalk from 24 Ave to Hwy 582 (winter heat & hoarding)

Earthworks	\$6,000
Sidewalk – 110 m at ~\$400/m + 2 WC ramps @ \$1200 per	\$46,400

Asphalt pathway within Municipal Reserve alignment

Earthworks	\$6,000
Asphalt ~250 m @ \$250/m	\$62,500
Removals & Realignment for intersection	~\$12,000
Engineering Support	~\$2000
Contingency	\$15,000
Approximate Cost	\$149,900

Option 2: Alternatively, install an asphalt pathway beginning at the municipal reserve adjacent to 300 Morris Place, across an existing abandoned approach and continue north to connect to the existing sidewalk network in Shantz Crossing (represented by the blue line in the image below). This would require acceptance from Alberta Transportation as well as from the landowner in Shantz. The asphalt pathway on the south side of the highway can become a future permanent pathway and wouldn't necessarily need to be removed.



Earthworks 2.5 m Asphalt across existing Hwy. approach

Earthworks	~\$4,000
Asphalt 160 m @ \$250/m	\$40,000
Hwy 582 Traffic accommodation	\$3,000
Contingency	\$6,000
Demo	~\$10,000
Approximate Cost	\$63,000



SPECIAL COUNCIL MEETING Request for Decision (RFD)

Vision: *The Place to Grow.*

Mission: *Creating the Place to Grow.*

RECOMMENDATION

That Council approve option 1 for the Shantz Pedestrian Connectivity in the amount of \$149,900.

OR

That Council approve option 2 for the Shantz Pedestrian Connectivity in the amount of \$63,000.